



The ACE Mentor Program of Greater New York **Annual Report** **2016-17**

Engage.Excite.Enlighten.



The background of the entire page is a grayscale aerial photograph of New York City. The Empire State Building is the most prominent feature, standing tall in the center. Other skyscrapers and the city's dense urban layout are visible in the background and foreground.

About Us

The ACE Mentor Program is a not-for-profit organization that helps prepare high school students for careers in design and construction through mentoring by industry professionals. Our mission is to engage, excite and enlighten high school students to pursue careers in architecture, engineering, and construction through mentoring and to support their continued advancement in the industry.

2016-2017 **By the Numbers**

1400

Students Engaged

46

Teams

500+

Mentors

213

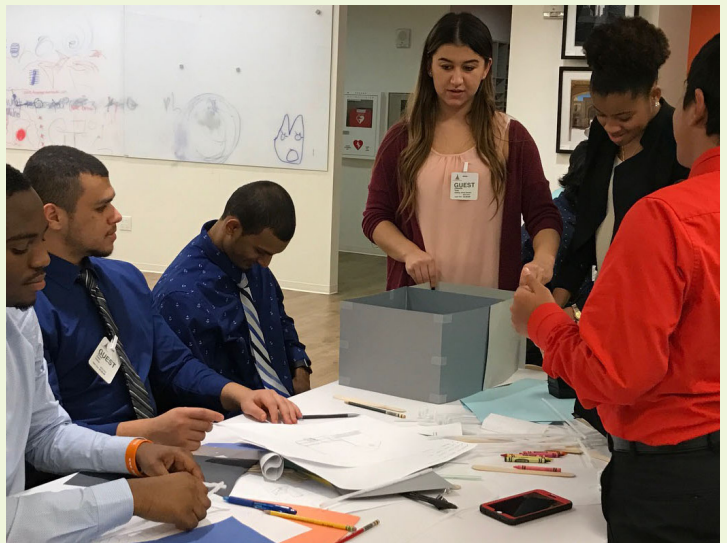
Schools Represented

200+

Firms Involved

\$200K

Given to
Scholarship Fund



Letter from the **Chair of the Board**



John H. Pierce

Senior Vice President,
Design & Construction
Rockefeller Group

As the incoming chairman of the ACE Mentor Program of Greater New York, it is my privilege to build upon the great accomplishments of my predecessor, Milo Riverso. The 2016-2017 ACE season was a banner year with continued growth of the program.

During my 20+ years working with the ACE Mentor Program, I have been a Mentor Team Leader and Committee Member, as well as serving my sixth term on the Board of Directors. I have also served two terms on the ACE National Affiliate Council. The perspective gained through these experiences will help guide my leadership for the organization as we move forward. The Board of Directors has embarked on a 5-year Strategic Planning process with a focus on Smart Growth.

We will continue our efforts to develop the next generation of architects, engineers and construction managers while expanding engagement with our supporters.



Letter from the **Executive Director**

Dear Friends,

The 2016-2017 academic season was a year of success and new beginnings for the organization, and for myself as well. As we close this year – my first year as Executive Director of the ACE Mentor Program of Greater NY – I reflect upon the incredible support that I and the organization received from our sponsors, board members, school partners, students, and mentors. It is not surprising that 97% percent of our students report that participating in ACE increases their ability to work as a team; the fundamental core of our success as an organization is collaboration between the current and future generation of builders and designers.

Through increased outreach, we were able to introduce a record number of students to engineering, architecture, and construction management, all fields whose needs for a talented young workforce continue to grow. Fourteen hundred students in New York City and the surrounding suburbs entered the ACE Mentor Program this academic season and were mentored by almost 600 professionals, learning the fundamentals of the design and build industry and designing pseudo projects which they showcased to parents, teachers, and friends.

It is a great pleasure to see how much the students learn and grow over the course of the season, how excited they are to present their work, and how many students transition into undergraduate programs in engineering and architecture. I look forward to many more years of success!

Sue Veres Royal

Executive Director,

ACE Mentor Program of Greater New York



ACE Mentor Program of Greater New York

ACE is a free after-school program for high school students; students are mentored by teams that are organized like a “real life” design team that includes a developer/owner, an architecture firm, a construction management company and civil, structural and electrical engineers.

Students meet at one of the mentoring firms, thus seeing first hand how an architectural, engineering or construction management firm operates. Teams meet twice a month after school during the school for two hours per week and engage in a project-based learning environment. The teams decide together on a design project that is tailored to the students’ interest. Students walk through the design, construction and logistical aspects of developing their pseudo project. Sessions include hands-on activities, use of design software, office tours and field trips to construction/project sites. Teams will develop a model and/or poster of their project, as well as a PowerPoint presentation. At the end of the year, students will present their project to parents, teachers and their mentors.

41%

Female Students

58%

Minority Students

“My favorite part of ACE was the amazing connections that I was able to make in the program. The relationships between mentors and students, both friendly and professional, **built a strong base for me to establish a career in the engineering field.** ACE surrounded me with like-minded people with whom I will be connected.”

-ACE Student



Our Students

“ACE Mentor Program has opened my doors for my future after high school. It has helped me narrow down a concrete major to study in college. Most importantly, it has made me **extremely excited about starting college.**”

-ACE Student

97%

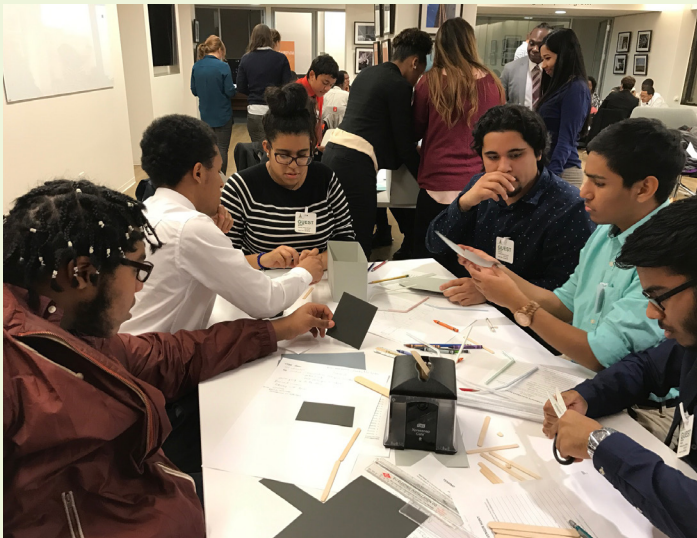
said that they gained knowledge and skills not taught in high school

97%

said that ACE improved their ability to work collaboratively as part of a team

93%

gained leadership experience and skills through ACE



Our Mentors

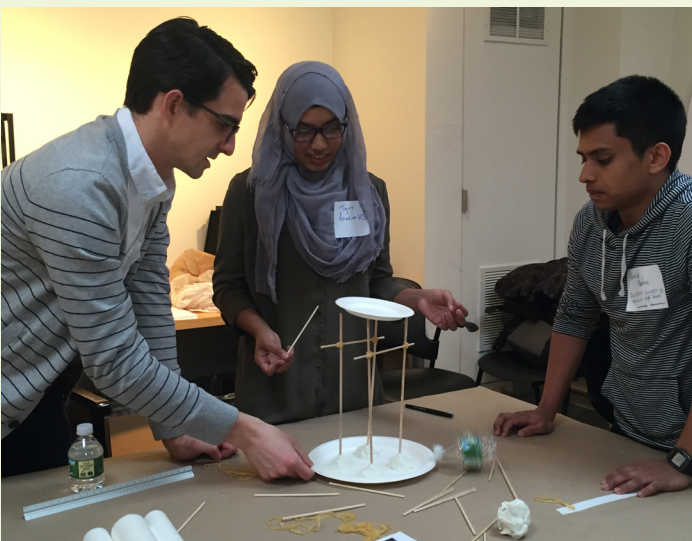
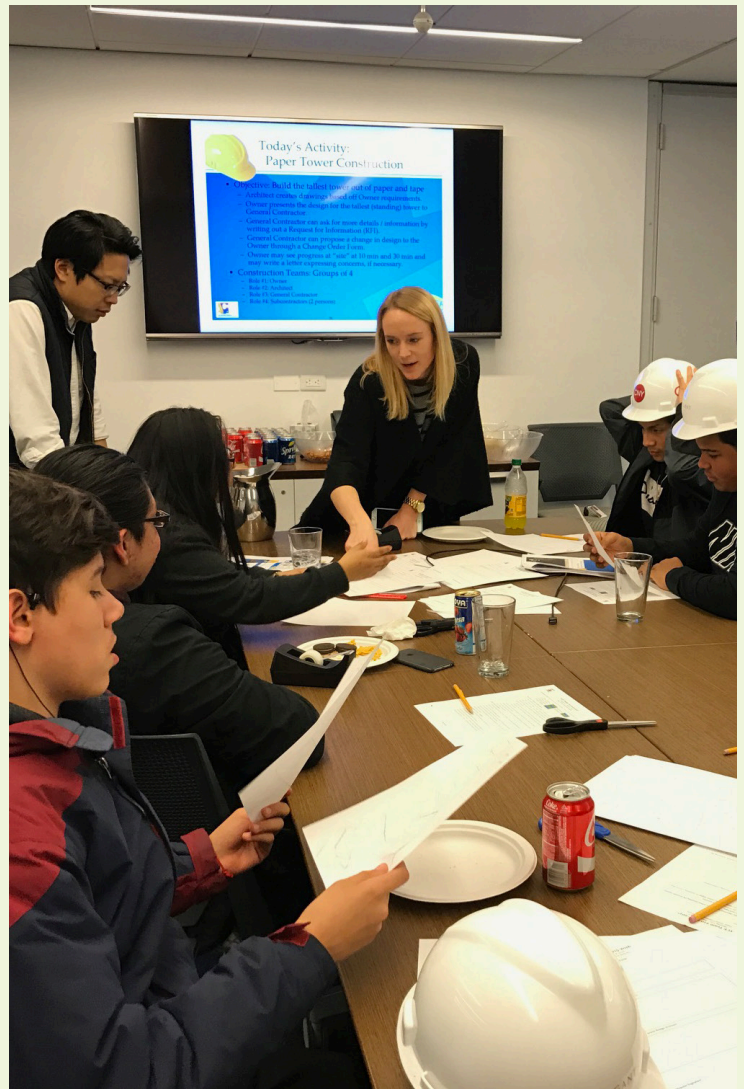
“When my students experience an **“aha moment”** or when they realize something they’re passionate about, [it] reminds me of why I mentor, and why I continue to be involved.”

- ACE Mentor

70% mentor students because of the pleasure in sharing their passion for the industry and their career

65% mentor with ACE because of gratification that they might be helping some students overcome challenging circumstances

58% of mentors learned better how to explain technical concepts to a lay audience



Our Alumni

Since its inception, the program has served over **10,000** students in New York and **65,000** students nationwide.

“[ACE] has helped me gain a realistic idea of the workplace. It also showed me the lack of diversity for women and minorities in engineering but my involvement in the program also **affirmed my abilities to transcend these barriers.**”

-ACE Alumni

- Each year, ACE Greater NY gives **\$200,000** that is awarded in **scholarships**
- In total, ACE Greater NY has given **over \$2 million** that has been awarded in scholarships to almost **1,000 students** to pursue degrees in ACE-related fields
- Nationally 95% of ACE graduates enroll in higher education and **almost 70% enter majors linked to the design and construction industry**
- 70% of alumni nationally say **ACE gave them an edge** over their freshmen college classmates
- Nationally, **female ACE students** enter college intending to major in civil, mechanical and electrical engineering **at almost twice the national rate** of comparable freshman enrolling in these fields
- The national percentage of **African-American and Hispanic ACE students** entering college in ACE-related majors are more than **double the national rates** of comparable freshman enrolling in these fields



ACE Mentor Program of Greater NY

Board of Directors

Milo E. Rivero, *STV Incorporated, Chairman, *Through March 31, 2017*
Hannah O'Grady, *ACEC New York, Vice Chair/Associations*
Denise Berger, *Port Authority of NY & NJ, Vice Chair/Government*
Linda Chiarelli, *New York University, Vice Chair/Real Estate*
Terrence E. O'Neal, *Terrence O'Neal Architecture LLC, Vice Chair/Architecture*
Stuart Koshner, *RCDolner LLC, Vice Chair/Construction*
Marcos Diaz Gonzelez, *AECOM, Vice Chair/Engineering*
Ralph J. Esposito, *Lend Lease (US) Construction LMB Inc., Secretary*
Geri A. Gregor, *Grassi & Co, Treasurer*
Robert Rubin, *Construction Disputes Avoidance Resolution, Counsel*

David Adelhardt, *Adelhardt Construction*
Joseph J. Aliotta, *Perkins Eastman Architects*
Jay Badame, *Tishman Construction*
Paul Bello, *AKF Engineers, LLP*
Aine M. Brazil, *Thornton Tomasetti*
David J. Burney, *Pratt Institute*
Victoria Cerami, *Cerami & Associates*
Lawrence Chiarelli, *NYU Tandon School of Engineering*
Felice Farber, *General Contractors Association of NY*
Richard Fischer, *WSP - Parsons Brinckerhoff*
Carl Galioto, *HOK*
Michael Garner, *Metropolitan Transit Authority*
William Gilbane III, *Gilbane Building Company*
Les Hiscoe, *Shawmut*
Andrew M. Hlushko, *Collado Engineering*
Cyrus Izzo, *Syska Hennessy*
Richard A. Kennedy, *Skanska USA Building Inc.*
Bruce Lilker, *Lilker Associates Consulting Engineers, PC*
J. Robert Mann, Jr., *E-J Electric Installation Co.*
Anthony Mannarino, *Extell Development Company*
Tony Mazzo, *Urban Foundation*
Chris McCartin, *Tishman Speyer*
Cheryl McKissack, *McKissack & McKissack*
Walter Mehl, *Jaros Baum & Bolles*
Gary Morris, *Jacobs Engineering*
Ted Moudis, *Ted Moudis Associates*

Patrick Muldoon, *Colliers*
Michael Neary, *Structure Tone*
Commissioner Feniosky Peña-Mora, *Dept. of Design and Construction*
John Pierce, *The Rockefeller Group, Incoming Chair*
Jeff Porrello, *Heritage Mechanical Services*
Rose Reichman, *Reichman Frankle Inc.*
Howard Rowland, *EW Howell*
Thomas Santiago, *Time Warner Inc.*
Walt Saukin, Ph.D., *Manhattan College*
Robert Schubert, *Boston Properties*
Frank Sciame, *Sciame Construction*
Robert Schimmenti, *Con Edison*
Mike Shamma, *Gannett Fleming*
Carlo Scissura, *New York Building Congress*
Philip Tugendrajch, *E T Partners, LLC*
Suzanne Veira, *New York City School Construction Authority*
Elizabeth Velez, *Velez Organization*
Marcelo Velez, *Columbia University*

John Magliano, *Chairman Emeritus*
Richard Anderson, *Director Emeritus*
Edward Rytter, *Director Emeritus*
Dave Peraza, *Director Emeritus*
Olga Gorbunova, *Mentor Committee Chair*
Louise Levi, *Alumni Committee Chair*

**Board of Directors, 2016-2017*

2016-2017 Supporters

3L & Company
7x24 Exchange Metro NY Chapter
Acheson Doyle Partners Architects
ADCO Electrical Corporation
AFK Group
Arenson Office Furnishings Inc
Arup Services New York
Bala CSI Consulting Engineers, PLLC
Banker Steel Company, LLC
BNP Media
Boston Properties, LP
BP Mechanical Corp
Building Contractors Association
Burgess Steel Erectors of New York, LLC
Cardoza Plumbing Corp
Cassone Leasing Inc
Cerami & Associates, Inc
Chelsea Lighting, Inc
Citnalta Construction Corporation
Cives Steel Company
Colliers International NY
Con Edison
Consolidated Carpet
Coordinated Metals Inc
Cross Country Construction LLC
Demar Plumbing Corporation
DeSimone Consulting Engineering Group, LLC
di Domenico + Partners LLP
Divey Tung Schwalbe LLP
E-J Electric Installation Co
Edward Leske Company
Empire Architectural Metal & Glass
Empire City Iron Works
EW Howell
FD Sprinklers, Inc
Five Star Electric Corporation
Forest Electric
FXFowle Architects, LLP
Gace Consulting Engineers PC
Gilsanz Murray Steficek, LLP
Goldfarb & Fleece LLP
Grassi & Co
Harris Rand Lusk
Heritage Mechanical Services
HOK
Holden & Flynn Universal Contractors, Inc
HAKS
Ianello Construction Co. Inc.
International Blind Contractors
Infinite Glass and Metal, Inc
International Office Concept USA, Inc.
J.T. Falk & Company, LLC
Jacobs Engineering Group

Jaros Baum and Bolles
Jatoma Charitable FDTN Inc
Johnson Controls
Joseph Neto & Associates
JRM Construction Management LLC
JT Roselle Lighting, Inc.
Judlau Contracting, Inc
Kings County Waterproofing Corp
Knight Electrical Services Corp
KS Engineers, PC
Langan Engineering & Environmental Services
Lend Lease
Lilker Associates
Loring Consulting Engineers, Inc
Mancini Duffy
McKissack & McKissack
Melto Metal Products Co., Inc
Mensch Millwork Corp.
Metro NY/NJ Chapter CMAA
Mistral Architectural Metal & Glass
Miller Blaker
Mueser Rutledge Consulting Engineers
NCI – Lending A Hand
Nelson Air Device Corp.
New York Building Congress
New York Building Foundation, Inc
New York Chapter ASHRAE
Newport Painting & Decorating
Nicholson & Galloway Inc
NYC School Construction Authority
O-H-M Electrical Corp
P.E. Stone Inc.
Par Plumbing Co. Inc
Parkview Plumbing & Heating Inc
Parson Brinckerhoff Inc
Perkins Eastman Architects, D.P.C
Prince Carpentry, Inc
RCDolner LLC
Reidy Contracting Group LLC
Rockefeller Group International Inc
Sal Vio Construction Corp
SBF Construction Inc
Severud Associates Consulting Engineers, P.C
Shawmut Woodworking and Supply
Singer Equipment Company
Skanska USA Building Inc

Skanska USA Civil
Spieler & Ricca Electrical Co. Inc
Stantec
Structure Tone, Inc
STUDIOS Architecture
STV Group, Inc
Syska Hennessy Group
Ted Moudis Associates
The Benevity Community Impact Fund
The Donaldson Organization
The General Contractors Association of NY
The Happold Foundation
The Mount Sinai Hospital
The Port Authority of NY & NJ
Thornton Tomasetti, Inc
TM Technology Partners, Inc
Tritech Communications, Inc
Turner Construction Company
Turtle & Hughes Inc
Urban Engineers
VJ Associates Inc of Suffolk
VVA Project Managers & Consultants
W & W Glass, LLC
WSDG LLC
WSP USA
Zonca Terrazzo and Mosaic LLC

2016-2017 **Mentor Firms**

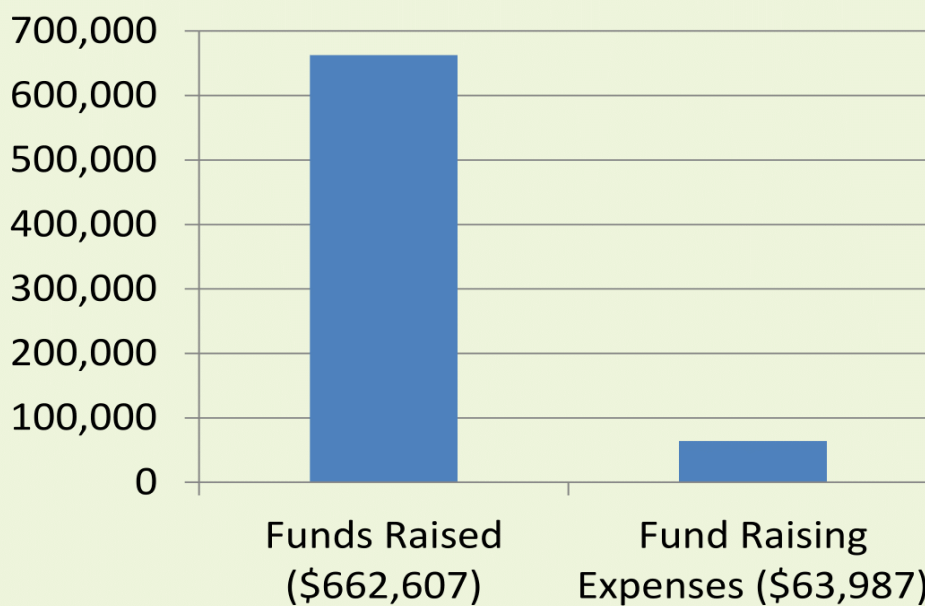
Acheson Doyle Partners
Adamson Associates Architects
Adelhardt Construction Corp.
AECOM
AKF Engineers
AKRF, Inc.
ARUP
Atelier Ten
Bard, Rao + Athanas Consulting Engineers, LLC
Beyer Blinder Belle
BIG-Bjarke Ingels Group
Brooklyn College CUNY
Buro Happold Engineers
Cannon Design
Cerami & Associates
Chase Bank
Citterio-Viel & Partners
Colliers International
Columbia Manhattanville
Columbia University
Con Edison
Cosentini Associates
Damiano Barile Engineers
Dattner Architects
Delta Airlines
Design Republic
DeSimone Consulting Engineer
di Domenico + Partners
Divney Tung Schwalbe
Dominic Mancino
E-J Electric Installation Co.
Ellana Construction Consultants
EnTech Engineering, PC.
Extell Development Company
EYP Archtiecture & Engineering
FXFOWLE Architects
GACE Consulting Engineers
Gannett Fleming
GC Eng & Associates
GCNY
Gensler
Gilbane Building Company
Gilsanz Murray Steficek
Gorton Partners
Goshow Architects
Greenman-Pedersen, Inc

H2M architects + engineers
HAKS
Hazen & Sawyer
HDR
HNTB
HOK
HRM Engineering
Hunter Roberts
Ipac
J. Calnan & Associates
Jacobs
JAJ Engineering
Jaros, Baum & Bolles
JFK&M Consulting Group
JRM Construction Management
JRS Architect, P.C.
JVS Restoration
Kenneth Irving Associates
KG&D Architects
Kohler Ronan
Kohn Pedersen Fox Associates
Langan
Lawless & Mangione - Architects & Engineers LLP
Lend Lease
Lilker Associates Counsulting
LIRR
Loring Consulting Engineers
Luminex Inc.
Mancini Duffy
Manhattan College
Marvel Architects
Mathews Nielsen Landscape Architects
Maxxum Construction Corp.
M-E Engineers
Michele Cetera Architects
Microdesk
MLDS Architects LLP
Molinelli Architects
MoreTrench
MTA Bridges & Tunnels
Mueser Rutledge Consulting Engineers
Naik Consulting Group, PC
Navigant Consulting
NYC School Construction Authority
NYCTransit Authority
NYU Tandon School of Engineering

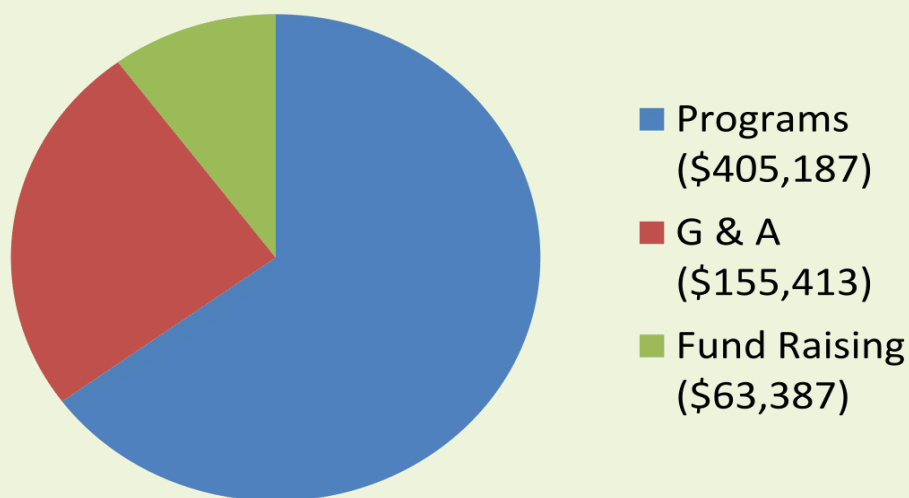
NYC Department of Design and Construction
NYU Tandon School of Engineering
OLA Consulting Engineers
Olin
P. Sands
Parsons
Perkins Eastman
Port Authority of New York & New Jersey
PVE, LLC
Robert A.M. Stern Architects, LLP
Robert Derector Associates
Rockefeller Group
ROGERS PARTNERS Architects+Urban Designers
RTSPCPinnacle Architecture and Design
Sam Schwartz Engineering
Schneider Electric
Sciame
Scully Construction LLC
Severud Associates
Shawmut Design & Construction
SHoP Architects
Silman
Skanska Civil
Skanska USA Building
Skidmore, Owings & Merrill LLP (SOM)
Skystone Group
Stantec
Stonehill & Taylor Architects
Structure Tone
STV Incorporated
Syska Hennessy
Ted Moudis Associates
The LiRo Group
Thornton Tomasetti
Tishman Interiors
Tishman Speyer
TRC
Triton Construction
Turner Construction Company
Vicky Hage Associate
Vidaris
Weill Cornell Medical College
WHR Architects
WSP | Parsons Brinckerhoff
ZGF Architects

2016-2017 Financials

Funds Raised vs. Fund Raising Expenses



Programs to Expense Ratio



2016-2017 Financials

Statement of Assets, Liabilities and Net Assets – Cash Basis March 31, 2017

Assets

Current Assets

Cash	\$633,254
Gold Outing	\$25,000
Total Current Assets	\$658,254

Security Deposit	\$1,800
------------------	---------

TOTAL ASSETS	\$660,054
---------------------	------------------

Liabilities and Net Assets

Liabilities

Due to ACE Scholarship Foundation, Inc	\$35,000
--	----------

Net Assets

Unrestricted	\$625,054
--------------	-----------

TOTAL LIABILITIES AND ASSETS	\$660,054
-------------------------------------	------------------

2016-2017 Financials

Statements of Support, Revenue and Expenses – Cash Basis *For The Year Ended March 31, 2017*

Support and Revenue

Gifts and Private Grants	\$21,741
Income from Special Events, Less: Direct Costs of \$146,251 in 2017 and \$119,523 in 2016	\$640,866
	<hr/>

Total Support and Revenue	\$662,607
----------------------------------	------------------

Expenses

Program Services	\$405,187
General and Administrative	\$155,413
Fund Raising	\$63,387
	<hr/>

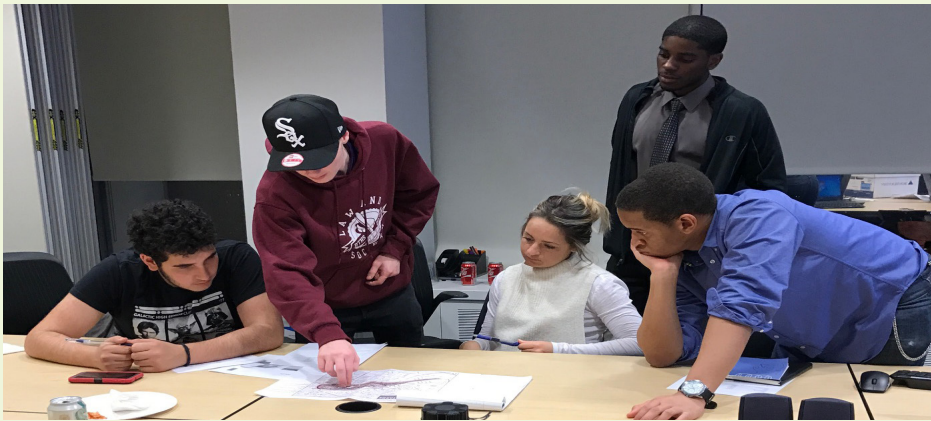
Changes in Net Assets	\$38,620
------------------------------	-----------------

Unrestricted Net Assets

Beginning of the Year	\$586,434
	<hr/>

Unrestricted Net Assets

End of Year	\$625,054
	<hr/>



"My favorite part of ACE was having hands on experiences with varied engineering specialties as I helped construct model buildings."

- ACE Student

